

Community Forestry Management Plan

2007-2012

Chesterfield Township, New Jersey



Michael Hlubik
Mayor

ENVIRONMENTAL COMMISSION

Donna Van Veldhuisen, Chairperson

Charles Jones
Jerry Spencer

Jane Ryan
Karl Braun

John Benton

Prepared By:
Forestry Consultants
William F. Brash Jr.
5 Wildwood Way
Freehold, NJ 07728
NJ Approved Consulting Forester
NJ Certified Tree Expert CTE #375

Table of Contents
Chesterfield Township Community Forestry Plan

	<u>Page</u>
I. Introduction.....	1
- Mission Statement	
- Goals and Objectives	
- Liability Statement	
II. Community Overview.....	7
- Community Map	
III. Community Forestry Program Administration.....	9
IV. Training Plan.....	10
V. Public Education/Awareness Outreach.....	12
-Public Education/Awareness	
- Tree City USA	
- Arbor Day program	
- Adopt-A-Tree Program	
- Homeowner Information	
- Memorial Tree Information	
- Chesterfield Township’s Biggest Trees Program	
- Project Learning Tree Program	
-Outreach Projects	
- Private Lands Stewardship	
- Right-Of-Way Management	
- County/Township Dialogue	
VI. Statement of Annual Tree Budget.....	17
VII. Statement of Plan Implementation.....	18
- Planned Stapes	
- Schedule of Activity	
- List Of Grant Requests (in order of priority)	
- Township Plan of Work	
VIII. Community Stewardship Incentive Program (CSIP).....	24
IX. Appendices	26
- Appendix 1: Chesterfield’s Biggest Trees	
- Appendix 2: Chesterfields Township Tree Ordinance	
- Appendix 3: Core Training Skills and Accreditation Program	
- Appendix 4: Brainstorming Session Results.	

Introduction

The focus of this plan is the trees and forests throughout Chesterfield Township. Chesterfield Township is 22+ square miles with a population of little more than 4,000 residents, and is still a rural community. The plan will fortify former statements and recommendations found in the Natural Resource Inventory and Master Plan of the township. The intent of the Community Forestry Plan is to identify specific actions to be taken by the township in achieving its mission to increase, enhance, and protect its tree and forest resources within the context of previous planning documents. This process requires extensive guidance from the Chesterfield Township Environmental Commission.

The Township's Master Plan and Natural Resource Inventory, reflect the residents desire to retain a rural atmosphere and the amenities trees and forests add to the landscape. The challenge is to protect and sustain these values as the township continues to grow and develop. Opportunities abound, but can not be achieved without reasonable vision and a plan for specific actions. Implementation of these actions will not be possible without investments of time, money, and the cooperation of the township committee and the general public. Trees may not only contribute environmental benefits, but also buffer the negative visual impacts of development. With forethought, these costs can be offset by developers and supplemented by grants from the State and other sources.

Mission Statement:

To increase awareness, enhance and protect the tree and forest resources of Chesterfield Township within the context of previous planning documents and with extensive input and guidance from the Chesterfield Township Environmental Commission and to promote the stewardship of the natural resources within Chesterfield Township.

Goals And Objectives:

Many goals and objectives were considered and discussed during an intensive brainstorming and information gathering session led by the township's Consultant, Bill Brash of Forestry Consulting. The environmental commission members offered and ranked the goals and objectives as listed below. The result represents excellent next steps for the township to pursue during the second five year period. The goals and

objectives of Chesterfield Township are listed in order of the priority given to each by the members of the Environmental Commission.

Goal 1:

Complete the safe removal of the trees that have been identified as hazardous in the street tree inventory.

Objectives of Goal 1:

- Write a successful CSIP and/or ESP Grant to accomplish this goal.
- Put a contract out to bid to remove the hazard trees.
- Award a contract and ensure the trees are removed to the Township's satisfaction.
- Contact Burlington County for the removal of hazardous trees in their rights-of-way.

Goal 2:

Better manage and maintain the existing trees and especially those trees that have recently been planted.

Objectives of Goal 2:

- Write a successful CSIP and/or ESP Grant to accomplish this goal.
- Include re-mulching as a grant objective and include educational opportunities for street tree owners to learn the proper way to mulch.
- Educate street tree owners of the problems with mulch volcanoes and the proper use of mulch around tree roots.
- Continue the good working relationship between the Planning Board, the township engineer and the environmental commission.
- Establish a program of corrective pruning of young and newly planted trees.

Goal 3:

Identify vegetative open space corridors and exercise good stewardship in the management of these lands.

Objectives of Goal 3:

- Establish an educational/exercise trail system.
- Promote passive use of green space areas.
- Protect and maintain watershed buffer zones and unique wildlife habitats.
- Assist in sustaining the benefits of the open space forest throughout the community.
- Involve the public and special organizations in these open space management objectives, (4H, church groups, scouts).

- To develop a passive recreational stream access and trail on township land near Crosswicks Creek in Crosswicks.

Goal 4:

To enhance tree planting efforts within the township's existing and proposed parklands in coordination with their intended use.

Objectives of Goal 4:

- Update the existing tree inventory by adding the new plantings being installed in developing areas.
- The completion of a comprehensive plan including hazard tree reduction, tree maintenance, and tree planting for each town center. This to establish (or re-establish) a tree-scape or "sense of arrival".
- To seek state funding for implementation of these plans and to enter into partnerships with homeowners and the county when appropriate.
- To conduct a tree maintenance demonstration by selecting 10-15 of the most prominent and significant trees in the township for pruning and preventative maintenance.

Goal 5:

To continue public education and awareness for all residents concerning the importance of trees to the quality of life..

Objectives of Goal 5:

- By working with a Chesterfield Township resident to establish a regular periodic newsletter to be published annually informing residents about their local tree community resource.
- Continue Tree City USA and Arbor Day celebration activities.
- To begin working with the township webmaster to implement timely forest pest information and updates for residents to access on the Township site.
- Continue the cooperative work with the Chesterfield Elementary School.
- Complete the planting of an ABC Arboretum to help educate residents about the community tree resource.
- To complete a plan for a tree education trail on township owned property located on Margerum Road.

Goal 6:

Update the existing Chesterfield Township Big Tree Inventory.

Objectives of Goal 6:

- Get the community involved in searching out, measuring and identifying the big trees within the Township.
- Include information on the Township's website and in the newsletter about these identified big trees to keep local interest.
- Create and maintain a digital picture of each Big tree registered.

Goal 7:

Encourage local teachers in Chesterfield Township to become involved with Project Learning Tree (PLT).

Objectives of Goal 7:

- Continue to encourage the participation of the Chesterfield Township third grade classrooms to participate in the programs offered at the Forest Resource Education Center (FREC).
- Provide information regarding PLT to the local teachers.
- Encourage teachers to access the PLT workshops and learning guides.

Goal 8:

Stay informed with activities along Chesterfield Township's border and within the border from outside owners, (NJ Turnpike) that may affect the tree resource.

Objectives of Goal 8:

- Pursue NNL tree planting opportunities during NJ Turnpike widening.
- Stay informed with the Crosswicks Creek-Doctors Creek Greenway Group.

Goal 9:

To increase the diversity of the tree species planted in Chesterfield Township

Objectives of Goal 9:

- Review, revise and expand the townships existing preferred tree planting list.
- Write a newsletter article on the importance of street tree diversity.

Goal 10:

Require minor sub-divisions in Chesterfield Township to include tree planting as part of the approval process.

Objectives of Goal 10:

- Revise the existing Township ordinance to require trees to be planted for every 40' of township road frontage in minor sub-divisions.
- If planting trees on the proposed minor subdivision is not possible than a fee paid to the Township's tree planting fund at the rate of \$300 per tree not planted. This will empower the EC with the ability to replace street trees that die or are removed over time.

Liability Statement:

Although street trees are an asset to the community, it is inevitable as they grow, they require care, maintenance and eventually replacement. Care and maintenance, in addition to planting “the right tree in the right place,” can help ensure that community trees not only contribute to the environmental and economic vitality of the area, but also reduce the potential hazards to public safety. Chesterfield Township must work with a reasonable budget that may not be able to meet each and every need of the community forest immediately. Therefore, it is the intent of this plan to focus available resources on the greatest need and outline a step by step action plan to achieve a healthy forest with commensurate reduced risks to public safety.

Chesterfield Township feels, by taking the logical steps outlined in the plan, it will garner public support for the plan implementation and demonstrate long-term benefits to the environment and public safety. The township also wants to become more pro-active in the management and care of its trees. Through inventory and hazard assessment, the Environmental Commission will initiate corrective action through the public works department, contracted professionals, or the county prior to structural tree failure and other hazardous tree related conditions. It is acknowledged that not all hazardous conditions will be predicted, however, good maintenance and care will reduce the possibility of failures. Through the newsletter, website and public awareness the Township wants to increase homeowner and school children’s awareness, appreciation, and knowledge of trees. This should enable them to contribute well-informed and meaningful efforts towards the health and sustainability of Chesterfield Township’s trees.

Following this Community Forestry Management Plan will demonstrate that Chesterfield Township is devoting reasonable levels of resources in a responsible manner to reduce the number of tree related accidents, and thereby, reduces its exposure to liabilities and increase public safety.

II. Community Overview

Chesterfield Township is a mosaic of agricultural fields and forests. The township’s three town centers and a few new developments are reasonably well covered with trees. Forestland is limited primarily to areas too wet or steep to be easily cultivated or developed. For the most part, the forests follow streams or other drainage ways (NRI, Rogers and Golden). The soils of the township are well suited to growing a wide variety of tree species, although problems with compaction in newly planted developments could limit species diversity and growth.

Similar to many rural townships with abundant natural resources, it has become apparent that increasing pressures to develop the land is putting these resources at risk, and presents a real challenge to the community. These challenges include increasing resources needed to plant and maintain trees in both the naturally wooded and the newly developing areas of the township.

Chesterfield Township's most recent Master Plan was completed in 1997. It is clear after reading the Master Plan that trees and forests are extremely important to the welfare of the township. The Township's overriding vision is one of retained open space and the sustaining of their natural resources. This Community Forestry Plan will identify tree-related activities to augment the realization of this vision. Another important document is the Chesterfield Township Natural Resource Inventory and Land Capability Analysis, (NRI) by Rogers and Golden, May 1976. The vegetation section of the NRI contains general information of forest cover and defines terms. Additionally it includes some common problems and recommendations for trees. This plan will not restate that data, but will point out the valuable insight contained in the vegetation section of the NRI. While the NRI does not make specific recommendations for trees, it suggests that planting more trees in the right places and of the right species is beneficial, and that protecting and maintaining the existing tree resource is necessary. Most of the forestland in Chesterfield Township is classified as wetland or transition areas and is protected by the Freshwater Wetlands Act. The challenge in Chesterfield Township is the reforestation of upland areas wherever possible to increase the tree canopy in the township for the reasons stated in the NRI and present Master Plan. Aerial photography of the area shows the township to be roughly 20% forested. While no specific percentage of forest cover is recommended, it seems prudent to increase forest cover by reforesting streamside zones, planting trees in new and existing developed areas, providing information to homeowners to encourage the planting of trees, and maintaining existing tree resources.

Traveling through the township, one cannot help but notice the impressive number of large diameter trees on or near public right-of-way and in town centers. Some of these trees may be in need of maintenance to ensure public safety. Another impression upon entering the town centers, is the need for more trees. The new trees would create the "sense of arrival" that benefits a township concerned about its tree resources.

III. Community Forestry Program Administration

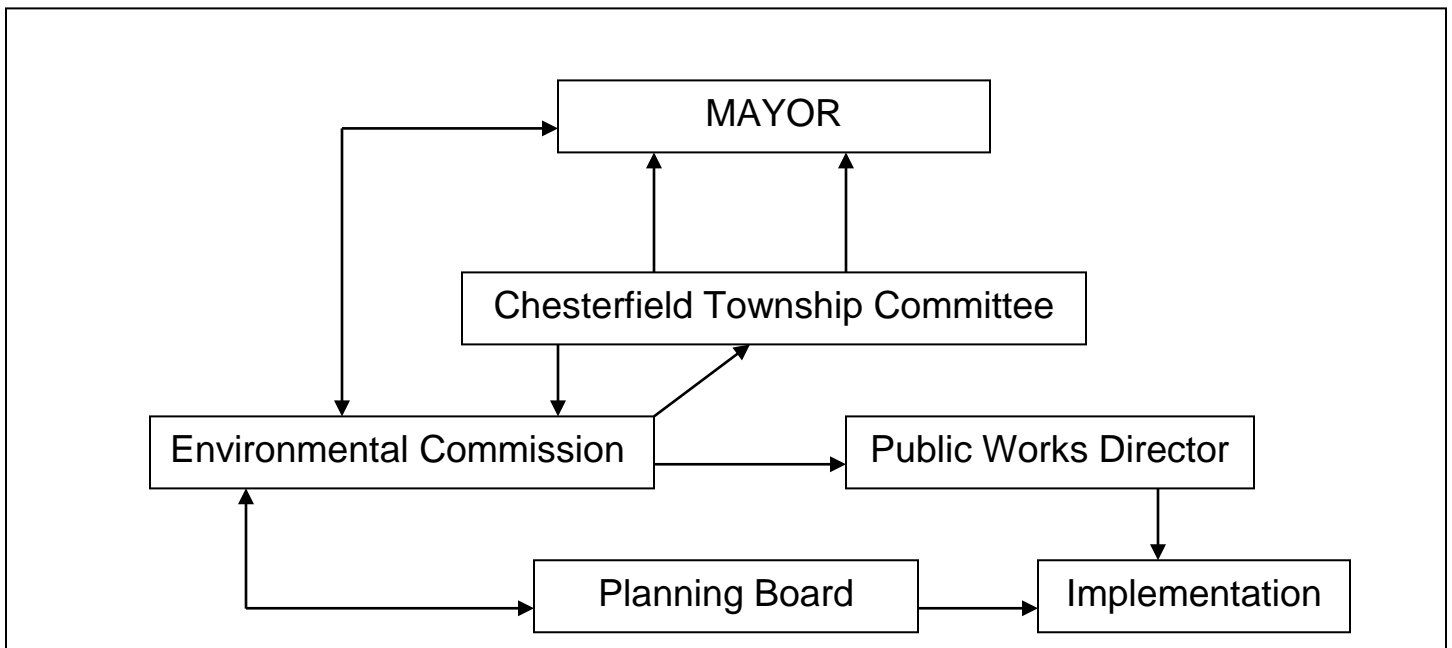
The mayor and the town council are responsible for overseeing the management of Chesterfield Township's municipal trees. The Public Works Department conducts or directs and works on the township trees. The Environmental Commission is designated as the advisory group responsible for tree related activities and recommendations.

All requests for tree related work are directed to Public Works, att. Mr. Greg Lebak, Director. Most of these requests are reports of hazardous conditions or tree failures. Mr. Lebak assesses the situation and either takes care of the situation using his own crew, calls in the county crew, or uses an outside contractor in difficult or questionable situations.

A very important part of tree management and planting is having the right tree in the right place. The administration of the Township Tree Ordinances (see Appendix 2) dealing with the new developments is overseen by the planning board with advisory input from the Environmental Commission.

Existing Tree Resource

The existing street tree resource is approximately 500-600 trees consisting mainly of *Quercus palustris*, *Gleditsia triacanthos*, *Acer platinoides*, *Fraxinus Americana*, and *Platanus occidentalis*. Chesterfield as a rural Township contains approximately 20% conifers as trees within the Townships' right of way. These conifers are mostly *Pinus strobus*, *Picea abies*, and *Pseudotsuga menzeisii*. There are no documented dominant pest in Chesterfield and the age of the resource is varied. Subdivision plantings are recent. Trees along the Townships established Roads and Villages roads are older and large.



IV. Training Plan

Core training is required under the New Jersey Shade Tree and Community Forestry Assistance Act (Appendix 3). The purpose of core training is to familiarize persons with the background of community forestry and shade tree commissions, the legal aspects of managing trees and the recognition of hazardous tree situations. It also enables individuals to help municipalities and counties gain approved municipal status. Two individuals have been core trained to represent Chesterfield Township. The two core trained persons are: from public works, Mr. Walter Idell and Environmental Commission member, Mr. John Benton. It is the intent of the township to keep at least the minimum number of person's core trained and up to date by accumulating the necessary continuing education units for certification.

Additional training and certification is needed concerning the legal rights and responsibilities of a Shade Tree Commission. Attendance at the annual meeting of the Shade Tree Federation for additional members to receive CORE training as well as for CEU requirements will be encouraged. Members will be encouraged to utilize specialized training offered by Rutgers's Cooperative Extension, NJ Chapter of the ISA, and the NJ Arborist Association. Training of individual Environmental Commission Members and Public Works staff is needed in:

- Tree Assessment and Identification
- Hazard Tree Identification
- Pruning and Maintenance
- Tree Care Disaster Planning
- Ordinance Review

Money to support this training is in short supply. The township is fortunate to have dedicated volunteers on the Environmental Commission. These volunteers will require training to increase their awareness and understanding of tree related issues. The need for training and exposure to other persons and municipalities with similar issues through attendance at the Annual Federation of Shade Tree Commissions meeting cannot be overemphasized. It is strongly urged that the Mayor and planning board officials attend at least one meeting. Chesterfield Township is on the verge of expanding its efforts to improve the care of its tree resources, and this effort will be more efficient when based on good science and up-to-date information gained through training.

V. Public Education/Awareness/Outreach

Given Chesterfield Township's limited financial resources, an ambitious Chesterfield Township Environmental Commission has made some significant accomplishments in public education, awareness, and outreach. Embodied in this plan are numerous initiatives for building the future on past successes

Tree City USA:

Tree City USA status has been achieved in Chesterfield Township for the past 6 years. Tree City USA is a program created by the Arbor Day Foundation to recognize municipalities of all sizes. The Tree City Program is a national award given to small towns, townships, counties, and cities in recognition of outstanding stewardship in dealing with the community's tree resource. The rewards for the community of Chesterfield are:

- Signs for community entrances
- A Tree City USA flag
- A walnut-mounted plaque
- Recognition of stewardship and the gratitude of further generations

To achieve Tree City USA status there are requirements and standards that must be met by the township. These are:

- A Tree Board or Department
- A Community Tree Ordinance
- A Community Forestry Budget with at least 2\$ per capita devoted to trees
- An Arbor Day Observation and Proclamation

Arbor Day:

Arbor Day celebrations have been held in the past in Chesterfield Township. They are held on a yearly basis and the township has made an effort to make the celebration an annual event. The mayor has issued a proclamation officially recognizing Arbor Day and creating an Arbor Day tree planting.

Tree related programs in Chesterfield Township and coordinated through Laura Garafalo the school organizer and contact for the school's Arbor Day program. Planning is in the process for this year's event, not only to satisfy one requirement of Tree City USA status, but to use Arbor Day as a tool to raise awareness of the value of trees and the importance of a community program to plant and maintain trees, The events will be centered in Chesterfield, will include school children, will be open to all township residents, and will consist of planting trees and activities related to trees for children.

Adopt-A-Tree Program:

The Chesterfield Township Environmental Commission recommends establishing a program whereby the municipality would cost-share tree planting in areas adjacent to roadways (somewhere between the house and the street). The program could include an agreement to maintain the tree and ensure that the “right tree is planted in the right place” Initial implementation of this program would be dependent upon a grant from the State.

Homeowner information:

The township requires the planting of trees in new developments just inside the private property line, not in the public right-of-way. The township does not have any responsibility for these trees. It is a strategy adopted by Chesterfield Township to reduce its long-term maintenance responsibility and its associated costs. This strategy, however, relies upon private property owners to assume the responsibility of long-term care and maintenance of the trees. In order to assist property owners with these responsibilities and to raise the awareness of trees among township residents, the Chesterfield Township Environmental Commission sees the need to do the following:

- Provide an assistance program for the replacement of trees that are part of the street tree requirements for new development.
 - Develop and provide brochures and bulletins to property owners highlighting:
 - Proper pruning of newly planted and young trees.
 - Mulching
 - Watering
 - Species recommendations for replacement plantings
 - Planting location/site selection. Re: wires, drains, etc.
 - Identification and control of disease and pests
1. Township Newsletter (after development of newsletter)
 - Include technical notes on care and maintenance of trees.
 - Updates and information relating to the existence and implementation of this plan

Memorial Tree Program:

The memorial tree program allows people or organizations to donate a tree, as a living memorial, in the memory of a loved one or to honor a person or event. The program, as envisioned by Chesterfield Township, will work in two ways. A person

wishing to donate a tree can either purchase a tree directly and donate it to the township, or they can donate the \$200-\$250 for the purchase of the tree directly into the township tree planting fund. This program will allow people from the community to memorialize an important event in their lives while helping the township to achieve its goals for tree planting.

Chesterfield Township's Biggest Trees Program:

In 1997, Chesterfield Township completed a publication listing the township's biggest trees (Appendix 1). One of the trees listed in this publication is the New Jersey State record Pin Oak. It is used as a reference tool to raise awareness of trees. This publication will be continually updated to include not only the township's largest "big" trees but also the largest specimen of each tree species growing in Chesterfield Township. The Chesterfield Township Environmental Commission expressed an interest in a Big Tree Award Program for children who find and report these "big" trees. Children would receive a public award for their efforts in helping the township with recording their natural tree resource.

Project Learning Tree:

The PLT program is an international environmental education program that is crafted to meet state and national education standards; PLT provides the tools educators need to bring the environment into their classrooms and their students into the environment. The PreK-8 activity guide contains 96 multi-disciplinary activities, each are carefully designed for specific grade levels and learning objectives. Recently the PLT guide has been correlated to the NJ Core Curriculum Content Standards that are required by the New Jersey Department of Education. Chesterfield Elementary School has actively participated with the PLT program by sending some of their teachers to PLT workshops and developing their own PLT trunk which is loaded with many teaching aids, books, and videos. The Chesterfield Township Elementary School district will continue to support the PLT program by sending their teachers to PLT workshops or possibly hosting a teacher in-service at the school. The school teachers are very interested in connecting natural resources to the curriculum. The school has, over the past few years, taken classes to the NJ Forest Resource Education Center, which utilizes NJ specific PLT lesson plans. Also there is a new program opportunity for schools to get actively involved in community stewardship with the, "NJ Stewardship Action Program." This program centers on stewardship planning and activities around the school grounds. Students can apply stewardship activities on site to achieve a higher level of knowledge

and skill. It is recommended that these efforts continue to grow and establish a healthy connection of education and the environment.

Outreach Projects

Private Land Stewardship:

All owners of private woodlands, especially owners of the seven most significant vegetation areas identified in the Natural Resource Inventory (Rogers and Golden), should be made aware of the New Jersey Forest Service's, Stewardship Program. These owners should be strongly encouraged to enroll. Some of these properties may already be enrolled as some of the names are familiar and probably have a long history of involvement with the State Forestry Agency. Thus, the manifestation of stewardship on these properties is worthy of recognition. Local acknowledgement of landowners following the Stewardship Program guidelines should be made in the local paper or newsletter and may inspire other landowners to enroll in the program.

Rights-of-Way Management:

Utility rights-of way can be managed to provide habitat for certain animal species and to create recreational paths. Properly managed, rights-of-way can be especially beneficial to ground nesting birds such as the Eastern Meadowlark, Fox Sparrow, and Bobolink. The Eastern Meadowlark is listed in the township's Master Plan and Natural Resource Inventory as a declining species. While not a top priority, advantages to both the economies of right-of-way maintenance and environmental benefits can be realized.

County/Township Dialogue:

County roads crisscross the township. It would be worthwhile to enter into a dialogue with the county to achieve a formal memorandum of understanding with respect to tree-related issues and responsibilities. This may help the county and township to achieve their tree maintenance, care and planting goals with each other's support.

VI. Statement of Tree Budget

Budgets for tree planting, care, and maintenance are notoriously sparse. This is especially true in large agricultural townships and municipalities like Chesterfield Township. Abundant natural resources have provided the amenities of trees without too much investment. It is evident, however, that pressures to develop and grow place ever increasing stress on the trees and environment. These stresses require new vigilance

and investment in the stewardship of forests and trees. Good planning and proper investment in stewardship will ensure big dividends for future generations.

Most of Chesterfield Township's current expenditures for trees are in direct response to hazardous conditions and storm-related damage. If Public Works employees cannot accomplish the work, it is contracted out or referred to the county road department when it occurs along their roads. The completion of the Community Forestry Plan and subsequent state grants will help Chesterfield Township move towards a more comprehensive Community Forestry Program.

Typical Yearly Tree Expenditures
(Statement of 2007 Budgeted Items)

1. Secretary/support Services	\$1,470.00
2. Recycling Program: Salary & Equipment (Wood Chips provided free to township residents)	\$16,000.00
3. Training	\$190.00
4. Environmental Services Program	\$2,500.00

i. Total: \$20,140.00

VII. Statement of Plan Implementation

This is Phase II, the second 5-year Community Forestry Plan to be prepared for Chesterfield Township. Settled in the 1700's, the township still boasts an impressive agricultural heritage with farms and open space abundant across the landscape. The township, like much of New Jersey, is undergoing, tremendous pressure to develop. In response, the Township has adopted a laudable Master Plan that takes strong measures to maintain the township's historic and rural character. The Master Plan includes innovative measures, such as transfer of development rights; to limit development to those areas suited to such activity.

The Environmental Commission and town's people, however, have realized the need to protect and manage their tree resources. Their concern has turned to the long-term stewardship of their forests and trees. The completion of this plan marks the beginning of Chesterfield Township's focus on preserving its trees for present and future generations.

Tree management for a township is much different than for a smaller self-contained town. Most townships are just beginning to acknowledge the need for management whereas most small towns and larger cities have been dealing with tree

issues for some time. The challenge facing townships is to begin in a planned and realistic fashion. This task is not simple, and requires new investments of time and money.

As discussed earlier, the Environmental Commission along with the Director of Public Works met to determine elements that needed to be addressed in their first Community Forestry Plan over the next five years. They identified the first steps and ranked them in order of importance (Appendix 4). These basic elements were then linked to the goals and objectives stated in Section 2 of this plan. The implementation of plan goals and objectives will proceed as follows.

Planned Steps:

1. Hazard Tree Reduction and Management:

Chesterfield Township will submit a CSIP grant in 2007 for the removal of the hazardous trees identified in the previously completed tree inventory. The work will be put out to bid for a private contractor, the bid awarded and the work supervised by the DPW. Those trees identified along county and state roads will continue to be referred to the appropriate agency for corrective measures.

2. Tree Planting:

Tree planting sites in Chesterfield Township are abundant. There is grass roots support for continued tree planting efforts. The Environmental Commission plans to write a 2007 CSIP grant to plant an ABC Arboretum (a tree planted to represent every letter in the alphabet) to be planted on appropriate space around the municipal building. This arboretum will be used as a focal point for conservation and community forestry education efforts. Other tree planting sites suitable for future CSIP tree planting grants include:

- The Chesterfield Township Elementary School.
- The First Aid Squad Building and nearby Recreation Site.
- The town centers of Chesterfield, Crosswicks, and Sykesville.
- The areas in and around detention basins.

3. Tree Maintenance and Care

There are opportunities to maintain and care for the tree resource in Chesterfield Township. The Environmental Commission intends to pursue CSIP money whenever it is available to maintain their existing tree resource. During this next 5-year plan, priority grant projects will include

hazard tree reduction and mature tree pruning time It is envisioned to select 30-40 trees distributed throughout the township to be pruned. Upon receipt of a grant from the New Jersey Forest Service, a contract would be developed and sent out to bid with the low bid New Jersey Certified Tree Expert awarded the contract to prune the trees. This action will increase the awareness and appreciation of properly pruned/maintained trees and garner public support for expanded efforts in the future.

Schedule of Activity:

To a large degree, many of the significant objectives of this plan will require funding from the State Forest Service. The availability and focus of future funding from the State is not known at this time making it difficult to schedule tasks by year. It is possible to list the grants in order of priority and to list the tasks to be undertaken in relative order of priority. Again, how fast the Township will be able to move through the plan is largely dependant on the availability of funding and township effort.

List of Grant Requests (in order of priority)

1. CSIP Hazard tree removal project.
2. Tree Planting Grant for Chesterfield Township- ABC Arboretum.
3. Street Tree re-mulching educational workshop.
4. Develop a continuous Township Tree Care newsletter to be published semi annually to inform residents about timely tree issues.
5. Tree Planting Plan and Tree Planting for the Town Centers
6. CSIP grant to establish Chesterfield Township's new Big Tree Contest and a printing of the winners.
7. Combination grant for education and outreach to provide funds for Arbor Day Tree Planting activities.

Township Plan of Work:

1. Complete the CSIP Grant for the hazard tree removal, ABC Arboretum and Street Tree Re-mulching Workshop
2. Begin work and complete the first tree care newsletter in coordination with the three CSIP activities above. Distribute to all 1200 Township households.
3. Develop the Township's approved, "trees for planting" listing to increase diversity and reduce sidewalk/utility conflicts.
4. Complete the application and achieve Tree City USA status.
5. Develop an annual Arbor Day Program with the elementary schools that includes a tree planting on school grounds.

6. Plan and Conduct an Annual Arbor Day Program.
7. Conduct a workshop to review and make recommendations to improve tree ordinances.
8. Select and obtain CORE and CEU training for volunteers and staff needed to stay in full compliance with the Shade Tree and Community Forestry Act requirements.
9. Continue to develop a “working tree team” with local organizations, 4H,FFA,Scouts and volunteers.

The Foregoing work should be completed by the winter of 2012.

1. Completion of Hazard Tree removals as identified in the street tree inventory.
2. Completion and delivery of a minimum of 5 separate tree care newsletters to all 4000 residents for a total of 20,000 copies.
3. Seek information, develop and complete the Township’s new preferred tree s for planting list.
4. Achieve 3 continuous Tree City USA awards.
5. Have established an annual Arbor Day tree planting program in the Townships elementary schools for 3 consecutive years.
6. Complete the requirements for a fully compliant municipality under the NJ Shade Tree and Community Forestry Act for the entire 5 year plan period.
7. Accomplishment of the remaining objectives in the plan can be inserted by the township at anytime in accordance with its annual plan of work.
8. The Chesterfield Township Environmental Commission will conduct an annual review of its past accomplishments and complete an annual plan of work for the upcoming year based upon this plan and current funding opportunities. An annual report will be submitted to the NJ Forest Service along with the township’s request for funding. The annual report will be submitted by the end of January for the previous calendar year.
9. Update the existing Street Tree Inventory.

VIII. Community Stewardship Incentive Program (CSIP)

Implementation of Chesterfield Township’s Community Forest Management Plan is dependent upon receiving grants of Community Stewardship Incentive Funds from the NJ Forest Service. This plan was prepared by utilizing CSIP #1. All of the remaining CSIP practices could be utilized as defined in this plan. The only CSIP #2, Insect and

Disease Management. No outstanding insect or disease problems were identified and insect/disease management did not emerge as a concern or issue during the planning sessions.

The order of priority CSIP practices in Chesterfield Township is:

- **CSIP #7: Tree Planting**

Planting of trees at Chesterfield Township Elementary School, the municipal building, First Aid Squad Building, and recreation area.

- **CSIP #2: Training**

Training required for completion of the Tree Assessment/Inventory (CSIP #5) and Hazard Tree Identification (CSIP #6).

- **CSIP #6: Tree Hazard Identification Plan:**

The completion of a Hazard Tree Identification Plan for the entire Township of Chesterfield.

- **CSIP #5 Assessment/Inventory**

Tree assessment and inventory of the town centers of Chesterfield, Crosswicks, and Sykesville.

- **CSIP #11: Tree Care Disaster Plan**

Creation of a comprehensive tree care disaster plan by the Environmental Commission of Chesterfield Township.

- **CSIP #8: Tree Maintenance**

Tree maintenance performed as recommended by plans and information collected in Tree Assessment/Inventory (CSIP #5) and Hazard Tree Identification (CSIP #6)

- **CSIP #3: Public Awareness and Outreach**

Brochures, newsletter, Tree City USA, Adopt-A-Tree, Memorial Tree Program, Project Learning Tree, Stewardship Projects on private and public lands, and tree education trails.

- **CSIP #4: Arbor Day Activities**

An annual Arbor Day program will be set-up for local school children.



- **CSIP #10: Ordinance Establishment:**

The Environmental Commission will conduct a review of tree ordinances to ensure they are innovative and sufficiently comprehensive.

- **CSIP #9: Tree Recycling**

The township will continue and improve its current tree recycling/wood chip program.

